

# Roscommon County Road Commission

James Porath, Commissioner  
Justin Wykoff, Commissioner  
Clint Stauffer, Commissioner  
Brian Vaughn, Commissioner  
Scott Eckstorm, Commissioner

820 E. West Branch Road  
Prudenville, MI 48651

Roger Saxton, Manager  
Phone: (989) 366-0333  
Fax: (989) 366-0299  
Website: [www.roscommoncrc.com](http://www.roscommoncrc.com)  
E-mail: [rrcc@roscommoncrc.com](mailto:rrcc@roscommoncrc.com)

## NOTICE TO BIDDERS

The Roscommon County Road Commission will receive sealed bids until 2:00 p.m. on January 26, 2023. Bids will be opened for tabulation and review at the Roscommon County Road Commission's regularly scheduled board meeting on January 26, 2023 beginning at 7:00 p.m. Our office is located at 820 E. West Branch Road, Prudenville, MI 48651.

### **Roscommon County Video & Cleanout of Storm Sewers**

Specifications may be obtained by contacting the Roscommon County Road Commission at the above address, by calling (989)-366-0333 ext.1006, emailing [Saxtonr@roscommoncrc.com](mailto:Saxtonr@roscommoncrc.com) or by going to [www.roscommoncrc.com](http://www.roscommoncrc.com). Please check the website for any inquiries pertaining to this bid document.

Submit bids in a sealed envelope that is clearly marked with the words **"Roscommon County Video & Cleanout of Storm Sewers."**

The Roscommon County Road Commission reserves the right to reject any or all bids, to waive irregularities in any bid, and to accept the bid deemed to be in the best interest of Roscommon County Road Commission.

ROSCOMMON COUNTY BOARD  
OF ROAD COMMISSIONERS

Jim Porath, Commissioner  
Justin Wykoff, Commissioner  
Clint Stauffer, Commissioner  
Brian Vaughn, Commissioner  
Scott Eckstorm, Commissioner

**Roscommon County Road Commission  
General Specification  
For  
Roscommon County Video & Cleanout of Storm Sewers**

**General**

The Roscommon County Road Commission is accepting sealed bids for the cleaning and video inspection of storm sewer in two different locations:

- M-55, Houghton Lake, Between Stanley Ave(Approx Sta 1494+00) and approx. Sta 1535+50, Attachment A, **Completion by April 14, 2023**
- Old 76, Saint Helen, Between Kewaune Rd(Sta 60+75) and approx. Sta 136+00, Attachment B, **Completion by August 31, 2023**

The Roscommon County Road Commission Special Provision for Video Inspection of Storm Sewers, the Roscommon County Road Commission Special Provision for Storm Sewer Cleanout, and the MDOT 2020 Standard Specifications for Construction shall be followed.

- Roscommon County Road Commission will perform traffic control of one set up at a time for contractor operations.
- No work in bad weather.(i.e. when the crew will need to perform snow removal duties)

**Insurance requirements**

The Roscommon County Road Commission requires that a "Certification of Insurance" be on file prior to allowing work within the right-of-way of any road under the jurisdiction of the Road Commission.

The certificate of insurance shall contain or include the following:

1. Board of County Road Commissioners and Roscommon County Road Commission and all employees named as addition insured to all coverage.
2. General liability coverage - \$1,000,000 each occurrence.
3. Automotive liability - \$1,000,000 each occurrence.
4. Worker's compensation – statutory limits.

M-55, Houghton Lake Bid Price \$ \_\_\_\_\_ Lump Sum  
Old 76, Saint Helen Bid Price \$ \_\_\_\_\_ Lump Sum

\_\_\_\_\_  
Company Name

\_\_\_\_\_  
Date

\_\_\_\_\_  
Address

\_\_\_\_\_  
Telephone

\_\_\_\_\_  
City, State & Zip

\_\_\_\_\_  
Fax

\_\_\_\_\_  
E-mail Address

\_\_\_\_\_  
Authorized Signature

\_\_\_\_\_  
Printed Name of Authorized Signer



ROSCOMMON COUNTY ROAD COMMISSION

SPECIAL PROVISION  
FOR  
**STORM SEWER CLEANOUT**

1 of 1

**a. Description.** This work consists of removing and collecting silt, solids, and other debris from existing storm sewers, catch basins, spillways, and end sections and disposing of all collected material in accordance with section 205 of the Standard Specifications for Construction.

As directed by the Engineer, storm sewer cleanout may be applied to entire lengths or to portions of the sewers shown on the plans. Portions of storm sewers will be designated if the length requiring cleaning is readily identifiable.

**b. Materials.** None specified.

**c. Construction.** The Roscommon County Road Commission will provide maintenance of traffic for one traffic control set up in accordance with section 812 of the Standard Specifications for Construction. Additional closures or maintenance will be the responsibility of the Contractor.

Select a method which ensures removal of all silt, solids and other debris from the storm sewer, resulting in unrestricted flow. Minimize disturbance to the area and contain all removed material in a manner approved by the Engineer.

Repair any damage to the existing drainage system which results from the cleaning operation. Provide soil erosion and sedimentation control measures or restoration items that become necessary due to the method of cleaning selected.

**d. Measurement and Payment.** The completed work, as described, will be measured and paid for at the contract unit price using the following pay item:

<b>Pay Item</b>	<b>Pay Unit</b>
Storm Sewer Cleanout .....	Lump Sum

**Storm Sewer Cleanout** includes only storm sewers authorized by the Engineer for cleaning. All costs associated with soil erosion and sedimentation control measures, restoration items, and repair work are considered included in this pay item.

All costs associated with sewer cleanout necessitated by the Contractor's operations will be at no additional cost to the contract.

# ROSCOMMON COUNTY ROAD COMMISSION

## SPECIAL PROVISION FOR VIDEO INSPECTION OF STORM SEWERS

1 of 2

**a. Description.** This work consists of making a digital video (DVD) record and log of the physical and structural conditions of the existing storm sewers. Ensure the video is professional quality, in color, and provides a clear and accurate visual record of the pipe condition.

Conduct the inspection and furnish three copies of the DVD(s) and written log(s) to the Engineer by the date specified in the bid documents. Ensure any portion of the DVD(s) determined by the Engineer to be unacceptable for the documentation is reinspected. Reinspection may include recleaning of the storm sewers prior to video inspection as directed by the Engineer. All costs associated with the need to reinspect will be at no cost to the contract.

The Contractor is responsible for damage to the existing storm sewers caused by their operation. Costs to repair damage caused by the Contractor's operations, as identified by the Engineer during creation of the DVD(s) and log(s), will be at no cost to the contract.

**b. Materials.** None specified.

**c. Video Inspection.** The Roscommon County Road Commission will provide maintenance of traffic for one traffic control set up in accordance with section 812 of the Standard Specifications for Construction. Additional closures or maintenance will be the responsibility of the Contractor.

Conduct video inspection in accordance with subsection 402.03.J of the Standard Specifications for Construction and as described herein. Ensure work is completed at a time approved by the Engineer to coincide with low flow rate periods prior to starting work. Provide the Engineer a minimum notice of at least 3 work days prior to starting work. Obtain approval from the Engineer for pumping, bypassing, and other methods of flow control prior to starting work.

Use video equipment specifically designed for sewer inspection and recording. Ensure video equipment is capable of pan, tilt, and zoom to provide all-around views of storm sewers, and produces high-quality, color recordings in DVD format with date/time stamp and digital annotation capabilities.

Inspect and record storm sewers, in either direction, at a rate not exceeding 30-feet per minute. Stopping may be necessary to properly document the storm sewer's condition. Winches, cable, rewind, and other devices must not obstruct the view or interfere with proper documentation. If the video equipment will not pass through an entire section in one direction, the Contractor must set up the equipment to enter from the opposite direction. If the video equipment fails to pass through from the opposite direction, the inspection may be considered complete at the discretion of the Engineer.

Ensure the video recording displays the date (month, day, and year) and the time (hours, minutes, and seconds). Ensure this information is displayed in upper left-hand corner of the frame. Ensure total storm sewer length, storm sewer size, and locations of sewer defects is displayed on the

upper right-hand corner of the frame.

**d. Measurement and Payment.** The completed work, as described, will be measured as a lump sum and paid for at the contract price using the following pay item:

<b>Pay Item</b>	<b>Pay Unit</b>
Video Inspection of Storm Sewers.....	Lump Sum



5 3 13  
M-55 Roscommon M 72022 08530

All quantities and proposed sewer grades, etc. are derived from old plans <sup>40</sup> W-26-1.


All sewer grades are to be verified by the Engineer prior to beginning construction and revised to fit existing conditions.

II. A. 17-18

This page is a clearer image of a portion of the following page.

POB  
~STA 1494+00

Control Section M 72022  
Job Number 08530A  
Begins Sta. 494+00

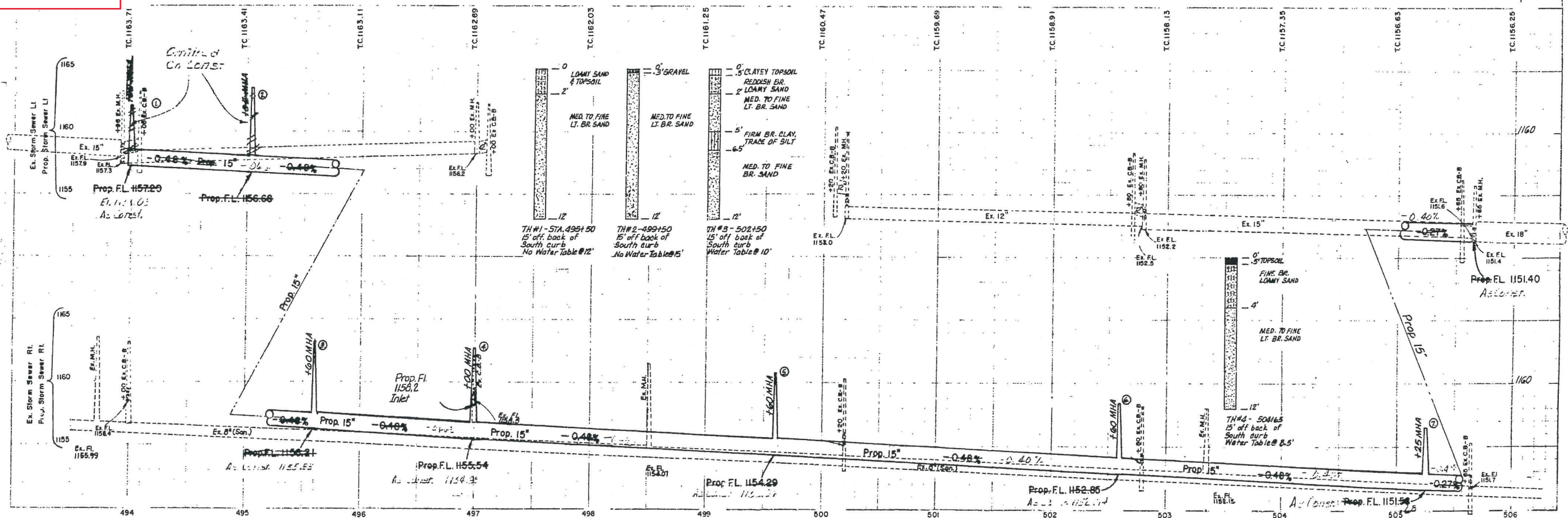
Removing Pavement.....113 Syds.  
Shown thus   
Concrete Pavement Grade 35P-HE  
Non-reinforced (7").....113 Syds.

Bituminous Approach  
(est. @ 250 # / Syd.)

class AA Approaches (L.M.) 4 Cys.

Removing Pavement-----26 Syds.  
Shown thus   
Concrete Pavement Grade 35 P-HE  
Non-reinforced (7")-----80 Syds.

Control Section M 72022  
Job Number 08530A  
Ends Sta. 506+00



08530A



Stanley St

Edgewood Dr

POB  
~STA 1494+00

8" AGG. BASE COURSE, CONC. CURB & GUTTER DET #8A B.C.M.C. @ 330' / SVA (47' F.F.)



















# Attachment B Kewaune Rd.

BM#1-Elev. 1205.81  
PK Nail, Nut & BM Tag  
in W. root of 12" J. Pine  
55' Lt. of Sta. 54+74

Entire Project - For Restoring Sewer Cuts.  
Aggregate Base Patching ..... 175 Cys.  
Temporary Patching w/Bit. Mat'l. .... 75 Tons

POT - Sta. 60+30.42 (M-76) =  
Sta. 100+00.00 (Kewaune Rd.)  
Due E. - 33.76' - U. Pole  
N. 55° W. - 71.16' - P. Pole  
N. 55° E. - 76.62' - T. Pole  
PK Nail & Tag

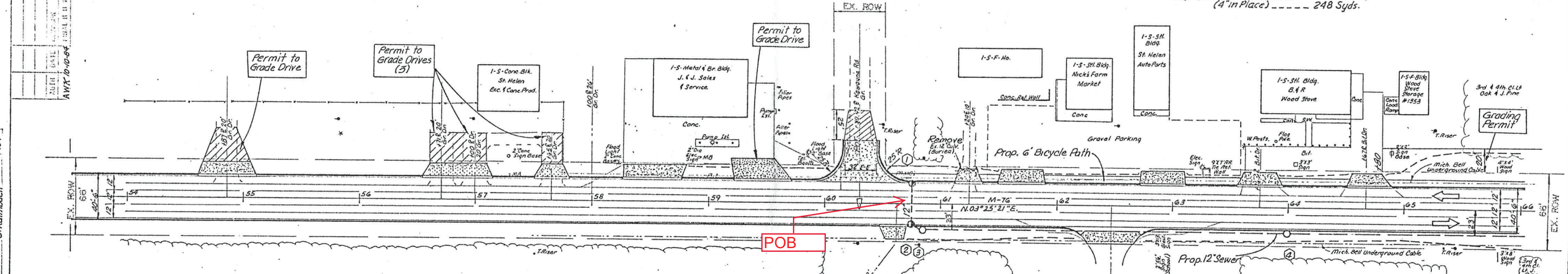
Sec. 27  
T. 23 N. R. 1 W.  
Richfield Twp.

Bicycle Path This Sheet  
Sta. 60+60 to Sta. 66+00  
Bituminous Bicycle Path ..... 31 Tons  
Aggregate Base - Bituminous  
(4" in Place) ..... 248 Syds.

5	10
OLD M-76	Roscommon
72091	21059

DATE	BY	OPERATION
1984	D. Keller	PRELIMINARY PL. & W. CHECKED
1984	D. Keller	FINAL PL. & W. CHECKED
1984	D. Keller	TRACED & REVISIONS
1984	D. Keller	FINAL PL. & W. CHECKED
1984	D. Keller	QUANTITY CHECKED
1984	D. Keller	SIGNED

DATE	BY	OPERATION
4-84	D. Keller	PLAN CHECKED
1984	A. McQuiston	PLAN CHECKED
1984	A. McQuiston	PLAN CHECKED
1984	D. Keller	PLAN CHECKED
1984	D. Keller	PLAN CHECKED
1984	D. Keller	PLAN CHECKED



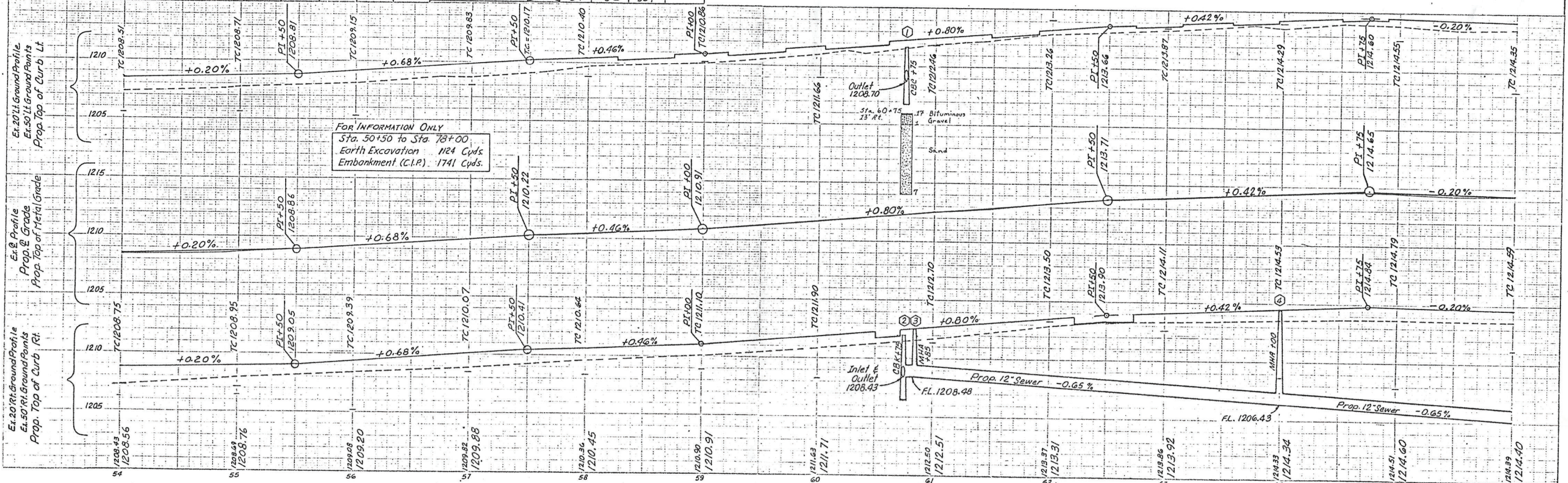
All Storm Sewer on plans  
unless noted otherwise

Surfacing Quantities (Sta. 54+00 to Sta. 66+00)  
Bituminous Base Mixture No. 500, 20 C. .... 616 Tons.  
Bituminous Mixture No. 1100 L, 20 A. .... 312 Tons.  
Bituminous Mixture No. 1100 T, 20 A. .... 288 Tons.  
Machine Grading - Modified ..... 12 Syds.  
Cold Milling Bituminous Surface ..... 364 Tons

Concrete Curb & Gutter Detail C-4 Rt. Side .. 1116 Lin. Ft.  
Concrete Curb & Gutter Detail D-2 Lt. Side .. 1217 Lin. Ft.

DRAINAGE STRUCTURE NUMBER	STATION	2' DIA. DRAIN STRUCTURE EACH	4' DIA. DRAIN STRUCTURE EACH	12' SEWER C-76-II TRENCH DET. 2 LIN. FT.	12' SEWER C-76-III TRENCH DET. 2 LIN. FT.	DRAINAGE STRUCTURE COVERS LBS.
1	60+75 L	CBC		39'		500
2	60+75 R		CBC	10'		500
3	60+85 R		MHA	315'		375
4	64+00 R		MHA	300'		375
TOTALS		1	3	325	339	1750

STATION	DRIVE OPENINGS DET. "L" LIN. FT.	DET. "M" LIN. FT.	BITUMINOUS CLASS AA APPROACH @ 220 TPI TONS	CLASS AA TONS
54+87 LT.	50'		6	37
56+71 LT.	60'		7	59
57+45 LT.	30'		4	30
58+50 LT.	50'		6	19
59+45 LT.	50'		10	32
60+30.42 LT.	24'		17	82
60+62 RT.	24'		3	10
61+24 LT.	24'		3	10
61+68 LT.	40'		5	14
62+47 RT.		84	6	19
62+92 LT.	40'		5	14
63+76 LT.	40'		5	14
64+67 LT.	40'		5	14
TOTALS		84	82	354





5	TECH.		11
Old M-76	Roscommon:	72091	2105

POT-Sta. 66+81.54  
N. 80° E. - 39.89' - 14" J. Pine  
S. 30° E. - 62.39' - 13" J. Pine  
S. 80° W. - 54.51' - 14" Oak  
PK Nail

BM#2 - Elev. 1214.8  
PK Nail, Nut & BMT  
in SE. root of 14" Oak  
(Cass Grifka sign on  
Tree) - 54' Lt. of  
Sta. 66+72

DRAIN STRUCT. NO.	STATION	2' DIA. DRAIN STRUCT.	4' DIA. DRAIN STRUCT.	4' DIA. 400 DEPTH OF DRAIN STRUCT. 8-15 FOOT	12' SEWER C-16-II TRENCH DET. 2	12' SEWER C-76-II TRENCH DET. 2	15' SEWER C-76-II TRENCH DET. 2	15' SEWER C-76-II TRENCH DET. 2	18' SEWER C-76-II TRENCH DET. 2	MANHOLE STRUCTURE COVERS
		EACH	EOCH		LIN.FT.	LIN.FT.	LIN.FT.	LIN.FT.	LIN.FT.	LBS.
5	66+75 L.	CBC			40					500
6	66+90 R.		CBK		12					500
7	67+00 R.		MHA	2		285				375
8	69+75 L.	CBC			39					500
9	69+75 R.		CBK		10					500
10	69+85 R.		MHA	1			305			375
11	72+00 L.	CBC			39					500
12	72+80 R.		CBK		10					500
13	72+90 R.		MHA					320		375
14	76+00 L.	CBC			39					500
15	76+00 R.		CBK		10					500
16	76+10 R.		MHA						270	375
	TOTALS	4	4	3	199	285	305	320	270	5500

POT- Sta. 73+33.74 (M+76)\*  
Sta. 10+00.00 (Hiqwaitha Rd)  
S. 73° W. - 74.04' - NE Cor. Conc  
N. 65° W. - 60.35' - P. Pole  
N. 77° E. - 76.62' - T. Pole  
PK Nail & Tag

POT-Sta. 73+53.65  
Due E.-74.29'-T. Pole  
S. 65° W.-83.33'-NE Cor.  
Conc. Slab  
Due W.-57.49'-P. Pole  
3.75° E.-89.40'-10' J. Pine  
1/2" Bar in Mon. Box

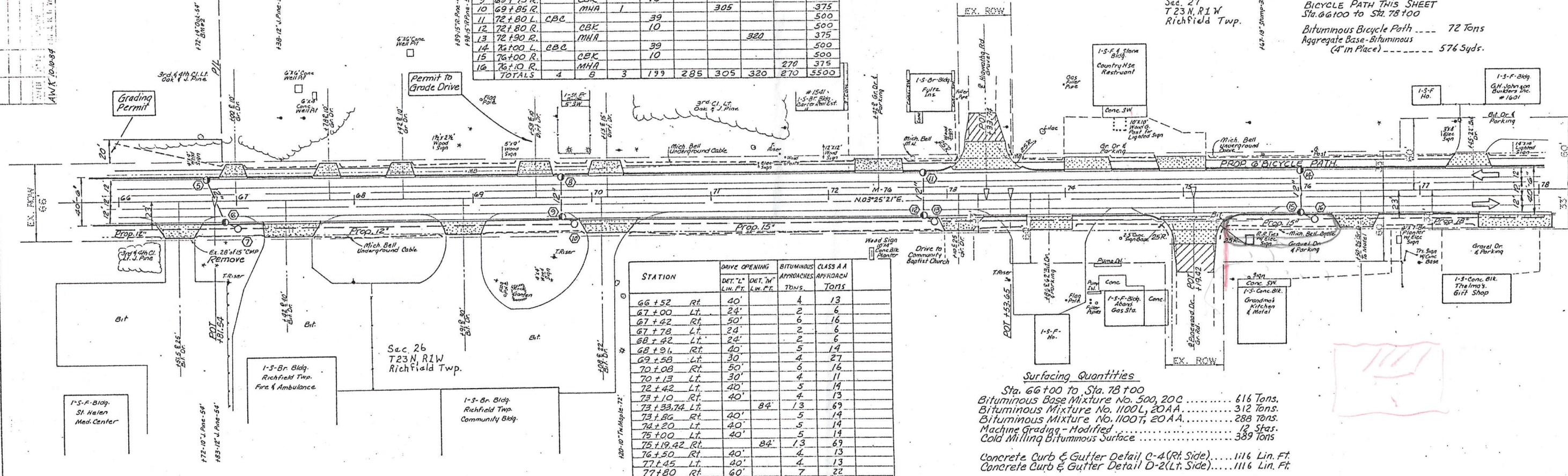
BM#3A-Elev. 1204.976  
RR Spike in East Side  
P. Pole - 58' Lt. of  
Sta. 75+56.5

POT- Sta. 75+19.42 (M-76)\*  
Sta. 10+00.00 (Pinewood Dr.)  
S. 55°W. - 80.21' - NE Cor.  
of Conc. Porch  
N. 50°W. - 69.95' - P. Pole  
N. 65°E. - 77.80' - T. Pole  
PK Nail & Tag

Sec. 27  
T23N, R1W  
Richfield Twp.

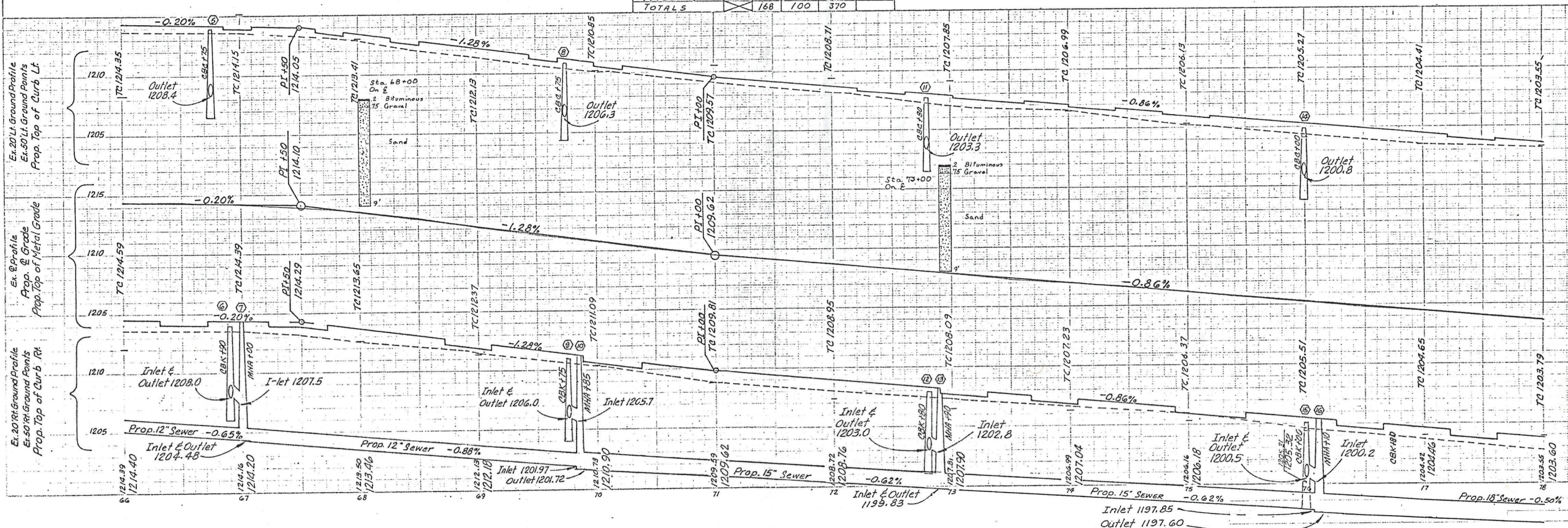
BICYCLE PATH THIS SHEET  
Sta. 66+00 to Sta. 78+00

Bituminous Bicycle Path	72 Tons
Aggregate Base-Bituminous (4" in Place)	576 Syds.

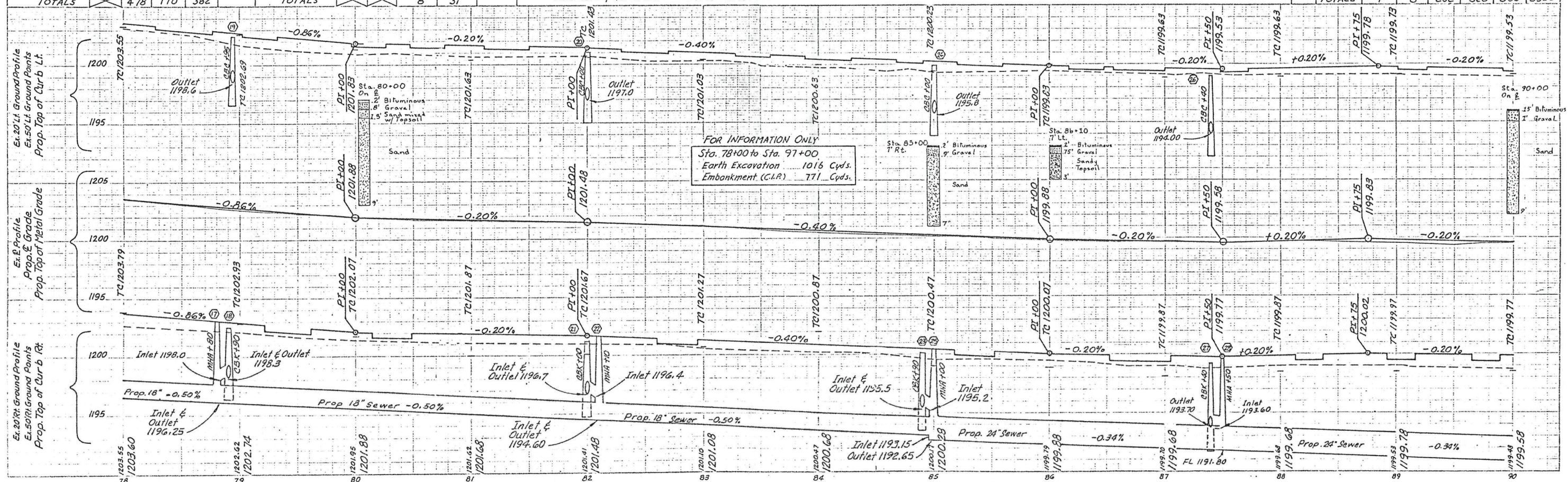


STATION	DRIVE OPENING		BITUMINOUS APPROACHES	CLASS A A TENS.
	DET. "L" LIN. FT.	DET. "W" LIN. FT.		
66 + 52 RT.	40'		4	13
67 + 00 LT.	24'		2	6
67 + 42 RT.	50'		6	16
67 + 78 LT.	24'		2	6
68 + 42 LT.	24'		2	6
68 + 91 RT.	40'		5	14
69 + 58 LT.	30'		4	27
70 + 08 RT.	50'		6	16
70 + 13 LT.	30'		4	11
72 + 42 LT.	40'		5	14
73 + 19 RT.	40'		4	13
73 + 33, 74 LT.	40'	84"	13	69
73 + 86 RT.	40'		5	14
74 + 20 LT.	40'		5	14
75 + 00 LT.	40'		5	14
75 + 19, 42 RT.	40'	84"	13	69
76 + 50 RT.	40'		4	13
77 + 45 LT.	40'		4	13
77 + 80 RT.	60'		7	22
TOTALS		168	100	370

<u>Surfacing Quantities</u>	
Sta. 66+00 to Sta. 78+00	
Bituminous Base Mixture No. 500, 20C	616 Tons.
Bituminous Mixture No. 1100L, 20AA	312 Tons.
Bituminous Mixture No. 1100T, 20AA	288 Tons.
Machine Grading - Modified	12 Sfs.
Cold Milling Bituminous Surface	389 Tons
Concrete Curb & Gutter Detail C-4 (Rt. Side)	
Concrete Curb & Gutter Detail D-2 (Lt. Side)	1116 Lin. F.









Monitowac

Lee Ave.

Airport Rd.

This Segment included

POT Sta. 90+08.11 (M-76) = Sta. 10100 (Monitowac)  
S. 55° E. - 58.04' - P. Pole  
S. 65° W. - 45.53' - 12" J. Pine  
N. 65° W. - 58.77' - P. Pole  
PK Nail & Tag

BM#5 - Elev. 1199.51  
PK Nail, Nut & BM Tag in E. roof of 20' Oak Bldg. front of Ho. #1893-38  
Lt. of Sta. 92+92

POT Sta. 93+43.37 (M-76) = Sta. 10100 (Lee Ave.)  
S. 50° E. - 81.32' - NW. Cor. Bldg.  
S. 55° W. - 64.26' - 20' Oak  
N. 65° W. - 59.54' - P. Pole  
PK Nail & Tag

STATION	DRIVE OPENING	DET. L"	DET. W"	APPROACHES	CLASS AA	CONC. CIG	REMOVING
		DET. L"	DET. W"				
90+08 LT.	64						
90+70 LT.	30						
91+05 RT.	60						
91+67 LT.	24						
91+95 RT.	60						
92+30 LT.	30						
92+69 LT.	24						
92+70 RT.	40						
93+43 LT.	64						
93+65 RT.	40						
94+55 LT.	40						
95+00 RT.	60						
96+48 RT.	80						
97+18 LT.	50						
98+20 RT.	40						
98+50 LT.	50						

STATION	DRIVE OPENING	DET. L"	DET. W"	APPROACHES	CLASS AA	CONC. CIG	REMOVING
		DET. L"	DET. W"				
98+75 RT.	40						
100+00 RT.	84						
100+00 LT.	84						
100+65 LT.	40						
100+95 RT.	40						
101+40 LT.	40						
101+80 RT.	45						
101+92 LT.	30						
TOTALS	341	154	465	34	24		

PI Sta. 100+00.00 (M-76) = Sta. 100+00.00 (Airport Rd.)  
4=00'04.39' Rt. (No Curve)  
S. 55° E. - 86.76' - NW. Cor. Gas Sta.  
S. 30° E. - 69.70' - NW. Cor. Sign Base  
S. 65° W. - 65.55' - P. Pole  
N. 55° W. - 75.95' - S.E. Cor. Bldg.  
Found Small Boat Spike in Mon. Box

4" Dia. Drainage Structure (C86) - 1 Ea.  
Drainage Structure Cover - 305 lbs.  
12" Sewer C76 II, Tr. Det. 2 - 100 Lft.  
(Exact Location to be determined by the Engineer on Construction.)

Sec. 22  
T23 N, R1W  
Richfield Twp.

1" S-F Bldg.  
Mini Mart &  
76 Gas Sta.  
Adjust Drain. Structure  
Cover - 1 Ea.

Abandon Drain.  
Structure - 1 Ea.

1" S-F Bldg.  
Baylor  
Agency

1" S-F Bldg.  
Baylor  
Agency

1" S-F Bldg.  
Baylor  
Agency

1" S-F Bldg.  
Baylor  
Agency

1" S-F Bldg.  
Baylor  
Agency

1" S-F Bldg.  
Baylor  
Agency

1" S-F Bldg.  
Baylor  
Agency

1" S-F Bldg.  
Baylor  
Agency

1" S-F Bldg.  
Baylor  
Agency

1" S-F Bldg.  
Baylor  
Agency

1" S-F Bldg.  
Baylor  
Agency

DATE	BY	REVISION
1984	O. Wagner	1. PRELIMINARY P.O.W. CHECKED
1984	A. Mess	2. FINAL DESIGN UNLOCKED
1984	A. Mess	3. FINAL DESIGN UNLOCKED
1984	A. Mess	4. FINAL DESIGN UNLOCKED
1984	A. Mess	5. FINAL DESIGN UNLOCKED
1984	A. Mess	6. FINAL DESIGN UNLOCKED
1984	A. Mess	7. FINAL DESIGN UNLOCKED
1984	A. Mess	8. FINAL DESIGN UNLOCKED
1984	A. Mess	9. FINAL DESIGN UNLOCKED
1984	A. Mess	10. FINAL DESIGN UNLOCKED

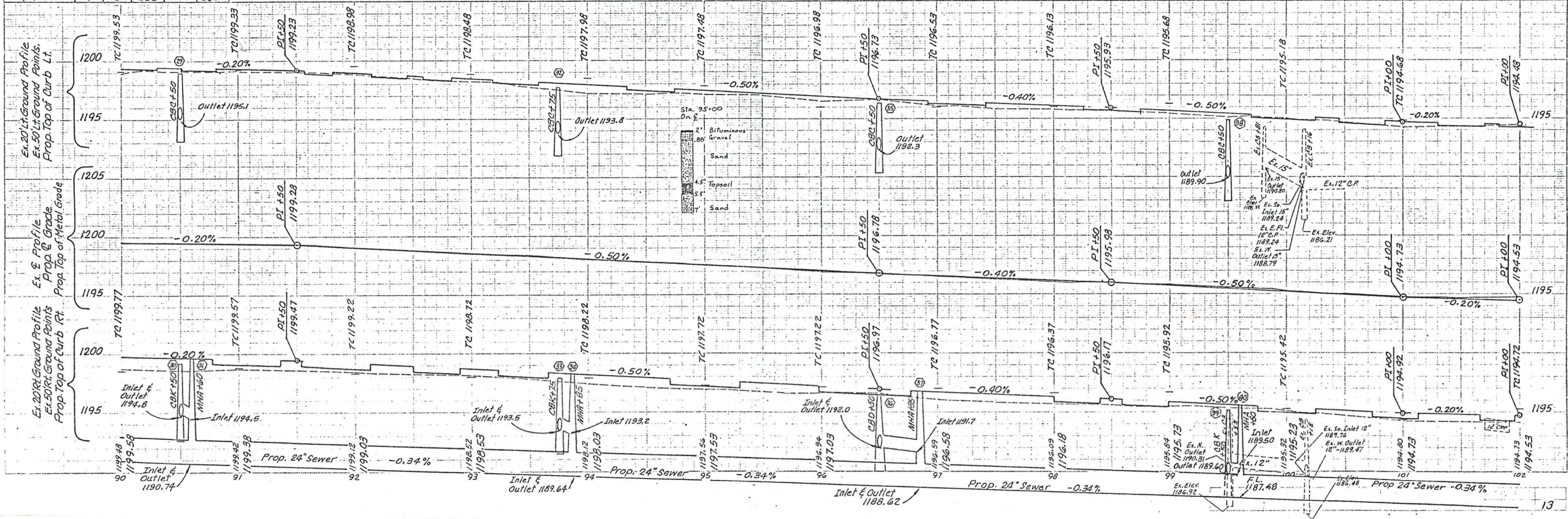
DATE	BY	REVISION
1984	O. Wagner	1. PRELIMINARY P.O.W. CHECKED
1984	A. Mess	2. FINAL DESIGN UNLOCKED
1984	A. Mess	3. FINAL DESIGN UNLOCKED
1984	A. Mess	4. FINAL DESIGN UNLOCKED
1984	A. Mess	5. FINAL DESIGN UNLOCKED
1984	A. Mess	6. FINAL DESIGN UNLOCKED
1984	A. Mess	7. FINAL DESIGN UNLOCKED
1984	A. Mess	8. FINAL DESIGN UNLOCKED
1984	A. Mess	9. FINAL DESIGN UNLOCKED
1984	A. Mess	10. FINAL DESIGN UNLOCKED

STATION	2" DIA. DRAIN STRUCT.	4" DIA. DRAIN STRUCT.	12" SEWER TRENCH DET. 2	24" SEWER TRENCH DET. 2	DRAINAGE COVERS
	EACH	EACH	LIN. FT.	LIN. FT.	LBS.
29 90+50 L.	CBC		39		500
30 90+50 R.	CBC		10		500
31 90+60 R.	MHA			325	375
32 92+75 L.	CBC		39		500
33 92+75 R.	CBC		10		500
34 92+85 R.	MHA			300	375
35 96+50 L.	CBC		39		500
36 96+50 R.	CBC		36		500
37 96+85 R.	MHA			275	375
38 99+50 L.	CBC		39		500
39 99+50 R.	CBC		10		500
40 99+60 R.	MHA			250	375
TOTALS	4	8	222	1150	5500

Bicycle Path This Sheet Lt.  
Sta. 90+00 to Sta. 102+00  
Bituminous Bicycle Path - 63 Tons  
Aggregate Base - Bituminous  
(4" in Place) - 504 Syds.

Surfacing Quantities  
Sta. 90+00 to Sta. 102+00  
Bituminous Base Mixture No. 500, 20C... 616 Tons.  
Bituminous Mixture No. 1100L, 20 AA... 312 Tons.  
Bituminous Mixture No. 1100T, 20 AA... 288 Tons.  
Machine Grading - Modified... 12 Stas.  
Cold Milling Bituminous Surface... 278 Tons  
Conc. Curb & Gutter, Det. D-4 (Rt. Side)... 1071 Lin. Ft.  
Conc. Curb & Gutter, Det. D-2 (Lt. Side)... 988 Lin. Ft.

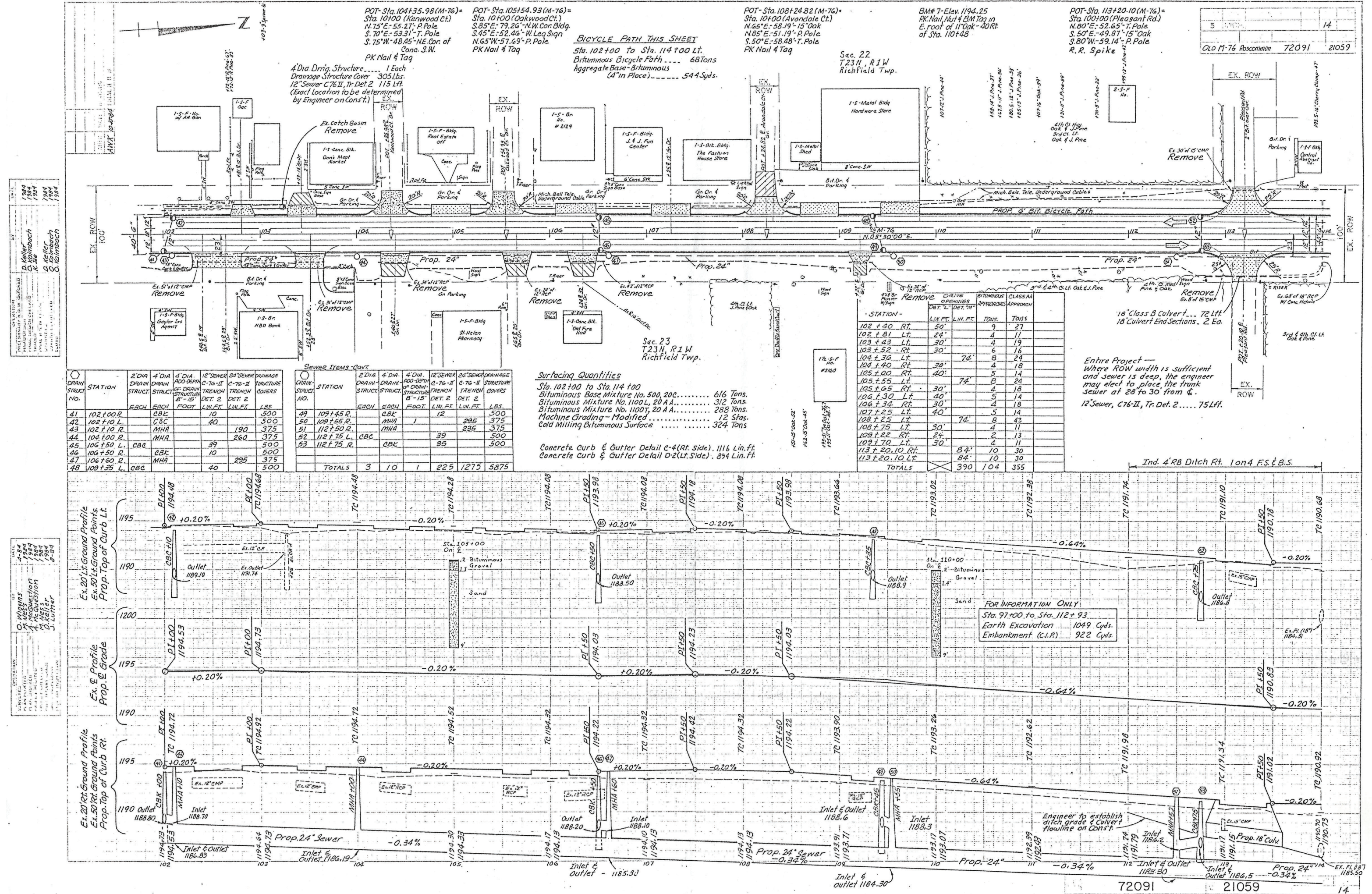
Sec. 26  
T23 N, R1W  
Richfield Twp.



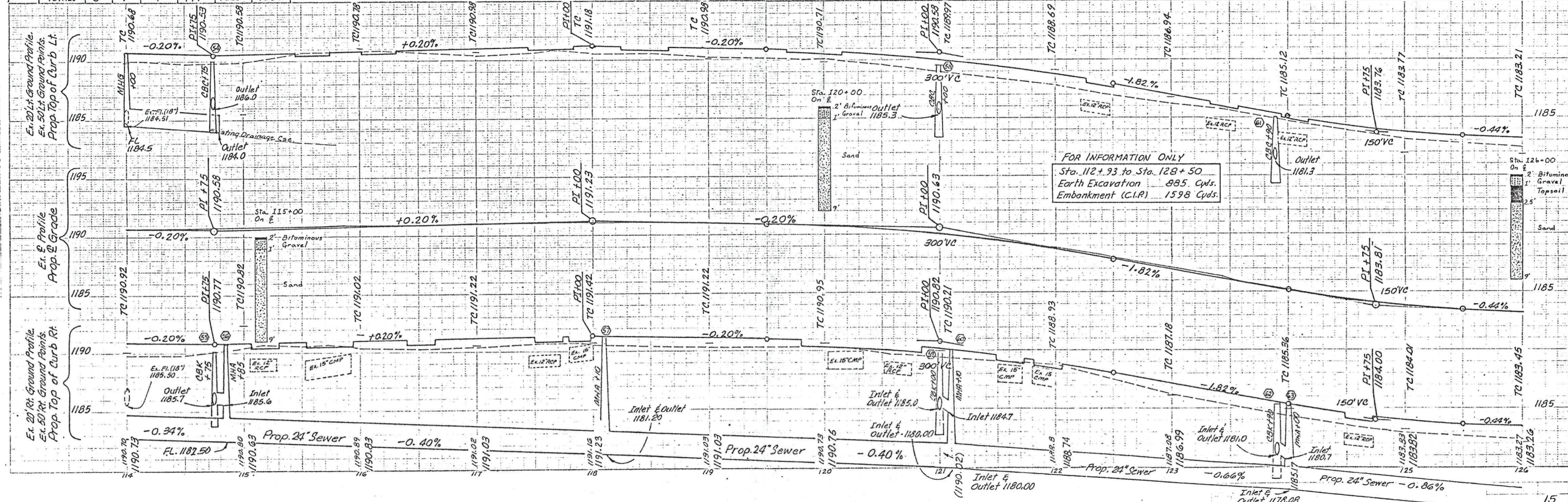
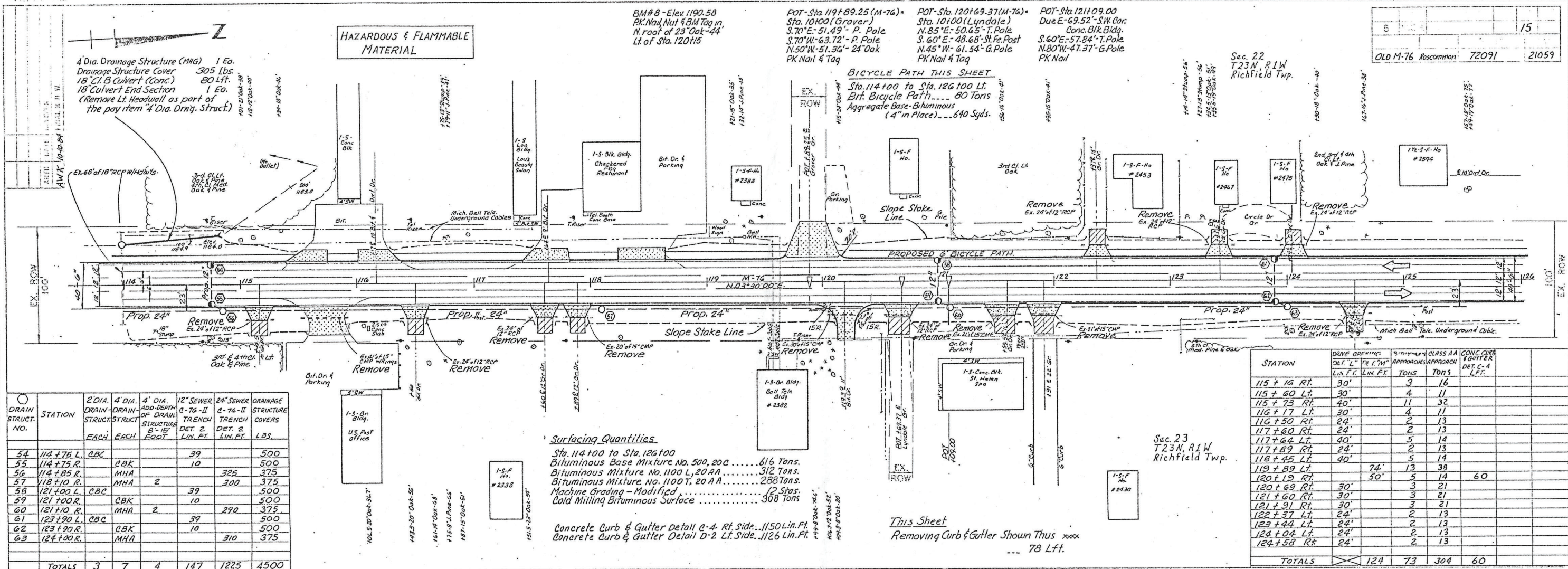
72091 NO. 2 1059 A

CONTROL SECTION











Sheet 16

Sac. 22  
T23N, R1W  
Richfield Twp.

DATE	SCALE	CONT. SEC.	JOB NO.	DESIGN UNIT	SHEET NO.	
		72091	21059		R. O. W.	CONST.
						16



SURVEYED	O. Wiggins	4-84
PLAN PLOTTED	M. Ness	1984
PLAN CHECKED	A. McQuiston	1984
PROFILE PLOTTED	M. Ness	1984
PROFILE CHECKED	D. Keller	1984
PRELIMINARY GRAVE LOCATION	J. Luther	8-84
FINAL INSPECTION		

OWNER/LEASER	DATE
PRELIMINARY H.O.W. CHECKED	1984
FINAL DESIGN	1984
FINAL DESIGN CHECKED	1984
TRAINED	1984
FINAL H.O.W. CHECK	1984
QUANTITIES	1984
QUANTITIES CHECKED	1984

